

# Hand nozzles - Selectable flow rate



The selectable flow rate nozzles of 500 lpm are available in two versions: "ECO" and "Premium".

The calibrated flow rates are easily selectable through an indexed ring. The maximum flow rate is indicated by a raised lug. The stream patterns are changed by rotating the head ring with tactile markings (straight jet, flashover, wide angle spray).

This family of nozzles comes with three possibilities of tips: Turbo (with spinning teeth), Debi (teeth cut in aluminium alloy) and Magi (moulded rubber teeth).

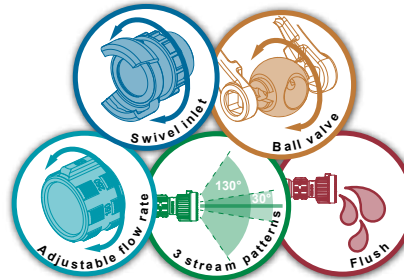
These nozzles are used by a large number of firefighters across the globe.

**Maximum working pressure:** PN16  
**Shutoff:** ball valve  
**Opening:** by operating handle  
**Flush position:** YES  
**Material:** aluminium alloy  
**Surface treatment:** hard anodisation  
**Body type:** cut into bars  
**Pistol grip:** one

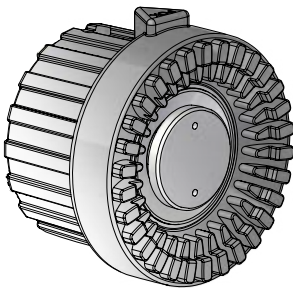
**Options:** low expansion foam attachment, medium expansion foam attachment.

**Bumper guard colours:**

**Conform to norm EN 15182-2**

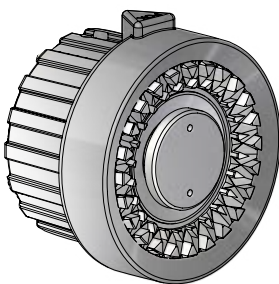


## Magikador 500



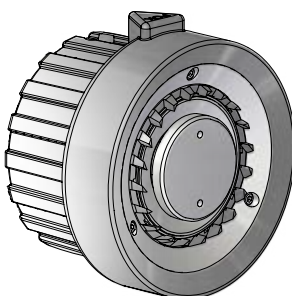
Inlet	Flow rate	Working pressure	Dimensions (mm)	Weight (kg)	Ref.
1.5" NST-NH female	30-60-95 GPM	100 PSI	290 x 266 x 126	2,44	<b>18458</b>
1.5" NST-NH female	30-60-95-125 GPM	100 PSI	290 x 266 x 126	2,44	<b>18459</b>
1.5" NST-NH female	40-60-95-125 GPM	100 PSI	290 x 266 x 126	2,44	<b>18486</b>
1.5" NST-NH female	60-95-125 GPM	100 PSI	290 x 266 x 126	2,44	<b>18487</b>
DSP DN40	150-250-500 lpm	6 bar	312 x 266 x 126	2,5	<b>22969</b>
DSP DN40	115-230 lpm	6 bar	312 x 266 x 126	2,5	<b>28605</b>
DSP DN40	150-250 lpm	6 bar	312 x 266 x 126	2,5	<b>28611</b>
DSP DN40	150-500 lpm	6 bar	312 x 266 x 126	2,5	<b>28615</b>
DSP DN40	60-130-235 lpm	6 bar	312 x 266 x 126	2,5	<b>28621</b>
DSP DN40	100-200-300 lpm	6 bar	312 x 266 x 126	2,5	<b>28627</b>
DSP DN40	200-350-500 lpm	6 bar	312 x 266 x 126	2,5	<b>28633</b>
DSP DN40	60-120-180-240 lpm	6 bar	312 x 266 x 126	2,5	<b>28639</b>
DSP DN40	150-250-350-500 lpm	6 bar	312 x 266 x 126	2,5	<b>28645</b>

## Debikador 500



Inlet	Flow rate	Working pressure	Dimensions (mm)	Weight (kg)	Ref.
1.5" NST-NH female	30-60-95 GPM	100 PSI	290 x 266 x 126	2,44	<b>13720</b>
1.5" NST-NH female	60-95-125 GPM	100 PSI	290 x 266 x 126	2,44	<b>13721</b>
1.5" NST-NH female	30-60-95-125 GPM	100 PSI	290 x 266 x 126	2,44	<b>13722</b>
1.5" NST-NH female	40-60-95-125 GPM	100 PSI	290 x 266 x 126	2,44	<b>18485</b>
DSP DN40	150-250 lpm	6 bar	312 x 266 x 126	2,5	<b>18992</b>
DSP DN40	150-250-500 lpm	6 bar	312 x 266 x 126	2,5	<b>22466</b>
DSP DN40	115-230 lpm	6 bar	312 x 266 x 126	2,5	<b>28607</b>
DSP DN40	150-500 lpm	6 bar	312 x 266 x 126	2,5	<b>28617</b>
DSP DN40	60-130-235 lpm	6 bar	312 x 266 x 126	2,5	<b>28623</b>
DSP DN40	100-200-300 lpm	6 bar	312 x 266 x 126	2,5	<b>28629</b>
DSP DN40	200-350-500 lpm	6 bar	312 x 266 x 126	2,5	<b>28635</b>
DSP DN40	60-120-180-240 lpm	6 bar	312 x 266 x 126	2,5	<b>28641</b>
DSP DN40	150-250-350-500 lpm	6 bar	312 x 266 x 126	2,5	<b>28647</b>

## Turbokador 500



Inlet	Flow rate	Working pressure	Dimensions (mm)	Weight (kg)	Ref.
1.5" NST-NH female	40-60-95-125 GPM	100 PSI	290 x 266 x 126	2,44	<b>08349</b>
1.5" NST-NH female	30-60-95-125 GPM	100 PSI	290 x 266 x 126	2,44	<b>08370</b>
1.5" NST-NH female	30-60-95 GPM	100 PSI	290 x 266 x 126	2,44	<b>09891</b>
1.5" NST-NH female	60-95-125 GPM	100 PSI	290 x 266 x 126	2,44	<b>09892</b>
DSP DN40	100-200-300 lpm	6 bar	312 x 266 x 126	2,5	<b>16219</b>
DSP DN40	150-250 lpm	6 bar	312 x 266 x 126	2,5	<b>16640</b>
DSP DN40	150-250-500 lpm	6 bar	312 x 266 x 126	2,5	<b>25217</b>
DSP DN40	115-230 lpm	6 bar	312 x 266 x 126	2,5	<b>28609</b>
DSP DN40	150-500 lpm	6 bar	312 x 266 x 126	2,5	<b>28619</b>
DSP DN40	60-130-235 lpm	6 bar	312 x 266 x 126	2,5	<b>28625</b>
DSP DN40	200-350-500 lpm	6 bar	312 x 266 x 126	2,5	<b>28637</b>
DSP DN40	60-120-180-240 lpm	6 bar	312 x 266 x 126	2,5	<b>28643</b>
DSP DN40	150-250-350-500 lpm	6 bar	312 x 266 x 126	2,5	<b>28649</b>